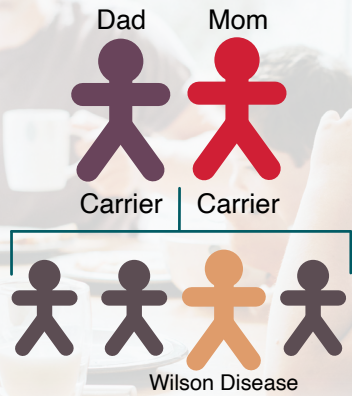


UNDERSTANDING WILSON DISEASE: The disease causes excessive copper accumulation in the liver and/or brain, beginning at birth.

GENETIC



Statistically, there is a chance that **1 in 4 children*** will have Wilson disease when both parents are carriers.

*Statistical averages can vary

Others in your family may be at risk. Family screening is important.



All children of a WD patient are automatically carriers.

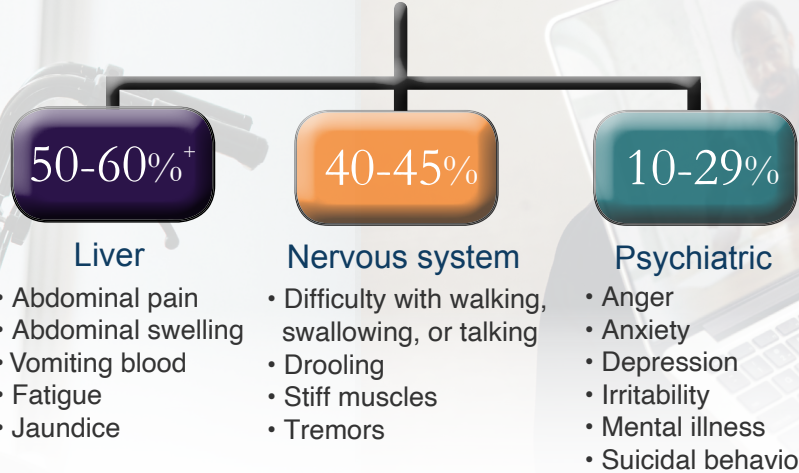
Each child has:

- a 1 in 4 chance of having Wilson disease,
- a 1 in 2 chance of carrying the gene,
- and a 1 in 4 chance of not having the gene.

Genetic testing can help confirm the diagnosis of Wilson disease and may help with family screening.

MULTI-SYSTEM DISORDER

A FEW OF THE MANY PRESENTING SYMPTOMS*



*Percentages are approximate and vary in scientific literature
+Approximately 5% present with acute liver failure

1 in 90 people are carriers of the disease. ALL children of a patient are automatically carriers.



The majority of patients with Wilson disease present symptomatically **between the ages of 5 and 35**, but patients may present at any age.

Patients may become progressively sicker from day to day, so early diagnosis and treatment can be critical. Treatment delays may cause irreversible damage. About 5-15% of patients will need a liver transplant: ~5% for acute liver failure and 10% for chronic liver failure.

TREATABLE

Wilson disease is a very treatable condition, however, **treatment for Wilson disease is a lifelong process.**

Treatment is aimed at removing excess accumulated copper and preventing its reaccumulation. With proper therapy, disease progression can be halted and often symptoms can be improved or new symptoms prevented.

No matter how the disease begins, it is always fatal if not properly diagnosed and treated.

\$\$ Cost of medication per year*



*Cost depends on what medication and daily dose a patient takes.





The Wilson Disease Association (WDA) relies on donations to support these essential programs:

EDUCATION

Provide educational programs, conferences, and materials, and answer phone and email inquiries, *all aimed at helping patients, caregivers, and medical professionals identify and manage the disease.*

SUPPORT

Provide referrals to physicians, other health care providers, and other assistive resources. *Provide support through virtual support group meetings and peer-to-peer connection.*

ADVOCACY & AWARENESS

Advocate for the needs of Wilson disease and other rare disease patients through advocacy partners to amplify the patient voice. *Advocacy efforts are focused on physicians treating Wilson disease, government agencies, and other organizations focused on liver and other rare diseases.*

RESEARCH

Work with investigators and clinicians to advance medical knowledge on the disease, increase awareness, and develop more accurate diagnostic methods, life-improving therapies, and *ultimately a cure.*



About Our Association

The Wilson Disease Association (WDA) is a 501(c)(3), nonprofit organization striving to promote the well-being of people with Wilson disease and their families and friends. We rely on the generosity of our donors to achieve our mission.

Our Mission

The WDA provides support and hope to people impacted by Wilson disease worldwide so that they may lead the best quality of life possible.

Our Vision

The WDA aspires to unmask the challenges of Wilson disease and unleash the promise of a cure.



WILSON DISEASE
ASSOCIATION
Unmasking Strength.
Unleashing Promise.

866.961.0533 - info@wilsonsdisease.org
224 W 35th St Ste 500
#676
New York, NY 10001
www.wilsondisease.org



Support & Empower People
Affected by Wilson Disease